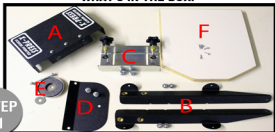


X-PRESS™ SCREEN PRINTER - ASSEMBLY

"Proudly manufactured in the USA"

WHAT'S IN THE BOX:



- A - Base**
- B - Platen Arms**
- C - Screen Clamp**
- D - Magnet Mount**
- E - Magnet**
- F - Platen**

Tools Required:

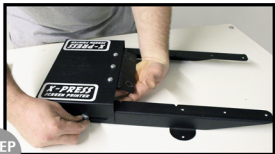


7/16" or 11mm wrench or socket
1/2" or 13mm wrench or socket
Phillips Screw Driver

STEP

1

Unwrap and layout all parts. All hardware is wrapped to it's corresponding parts, so keep hardware with parts as you unwrap it.



STEP

2

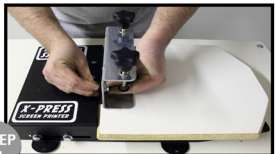
Attach platen arms (PARTS:B) to the base (PART:A).



STEP

3

Set the platen (PART:F) against the base (PART:A) hinge. Do not screw down the platen at this time.



STEP

4

With the screen clamp (PART:C) sitting flat on the platen, attach the screen clamp to the base hinge. The bolt heads should be on the inside of the clamp, with the nuts on the hinge side.



STEP

5

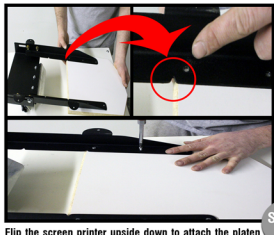
Attach the Magnet Mount (PART:D) to the Screen Clamp.



STEP

6

Attach the magnet (PART:E) to the magnet mount using the 3 inch long fully threaded bolt.



STEP

7

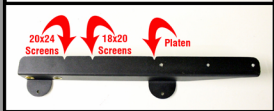
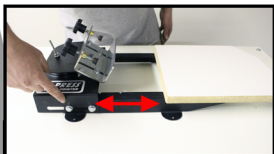
Flip the screen printer upside down to attach the platen (PART:F) to the platen arms. Notice the V notches in the platen arms. Line the edge of the platen up with these notches, then attach using the provided wood screws.

Continue on back side to learn adjustments of press...

X-PRESS™ SCREEN PRINTER - ADJUSTMENT / FEATURES

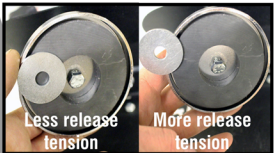
"Proudly manufactured in the USA"

PLATEN IN & OUT MOVEMENT



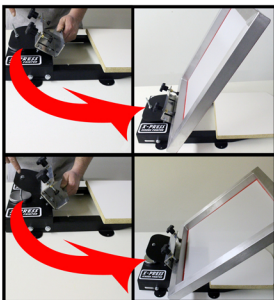
When using different size screens, the platen arms and platen can be moved in and out of the base, to center the platen on your screen. Simply loosen the side bolts and slide arms to the V-Notches for common screen sizes, as shown above.

MAGNET RELEASE TENSION



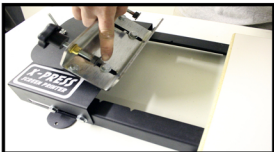
Different screen sizes and types weigh different amounts. You can adjust the magnet release tension with the Large Silver Washer. By putting the washer on the magnet more, the release tension will be less. By putting the washer on the magnet less, the release tension will be more.

SCREEN PITCH / TILT



To adjust the screen pitch / tilt when the screen is in the UP position, simply loosen or tighten the nut on the magnet 3" long bolt.

SCREEN OFF CONTACT



Off Contact is the height your screen sits above the platen. To adjust the off contact of your screen, you can loosen these bolts and raise or lower the screen clamp to set the off contact height for what your printing.