



WORKHORSE PRODUCTS

PRECISION SCREEN PRINTING EQUIPMENT



POWERHOUSE QUARTZ DRYER

QUARTZ TECHNOLOGY THAT MAKES A DIFFERENCE

Our claim to fame with the Powerhouse Series is our true understanding of Infrared energy, its emission and how it affects different materials. Our Quartz technology provides near instant-on capabilities for curing plastisols, with warm up times in seconds, not minutes. The Powerhouse Series' 180 degree radiant pattern of emission means energy strikes from all angles providing a more uniform cure; even on shirts that are not perfectly flat.

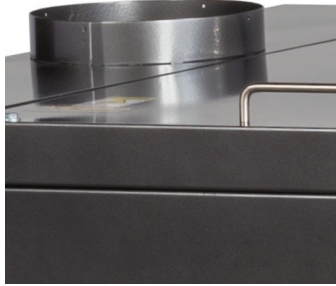
KEY FEATURES



DIGITAL CONTROL CENTER

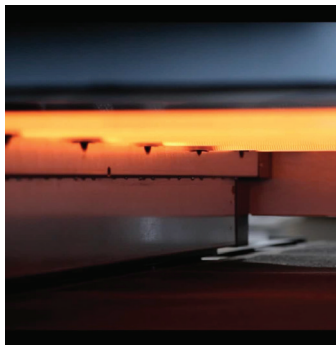
The Powerhouse uses state-of-the-art electronics and solid state components to accurately manage temperature and belt speed.

- Adjustable oven doors help to retain oven temperatures
- Removable oven hood provides easy access for regular cleaning
- 4-point belt tracking makes it easy to setup your dryer and extends the belt life
- Optional add-on infeed and outfeed facilitates garment loading and unloading



BUILT-IN ACCESSIBLE EXHAUST

The exhaust comes standard with the Powerhouse, giving the ability to release smoke, odor and heat outside of the building.



360° INFRARED ENERGY EMISSION

The Powerhouse Quartz provides the most uniform cure with its 360° radiant pattern of emission, reflectors and efficient convection system.

For waterbase and discharge printing, the Powerhouse Series incorporates a convection system of blowers and air knives to scrub the garments with hot air. The Powerhouse hybrid IR and Convection system allows us to cure more garments per hour in less space and at a lower price. Our digital control center uses state-of-the-art electronics and solid state components to accurately manage temperature and belt speed.

Model Number	PQ-2608	PQ-3011	PQ-5208	PQ-4013	PQ-5217
Part Number	11212	11226	11272	11237	11248
Belt Size	26" x 8' (66 cm x 2.4 m)	30" x 11' (76 cm x 3.3 m)	52" x 8' (132 cm x 2.4 m)	40" x 13' (102 cm x 3.9 m)	52" x 17' (132 cm x 5.1 m)
Production Capacity	200-300/hr.	400-500/hr.	400-500/hr.	600-800/hr.	1000+ /hr.
Power Requirements	ELECTRIC 1-Phase, 220V, 50-60Hz, 8400 Watts, 50amps 3-Phase, 220V, 50-60Hz, 9100 Watts, 24amps	ELECTRIC 1-Phase, 220V, 50-60Hz, 12000 Watts, 56amps 3-Phase, 220V, 50-60Hz, 12000 Watts, 38amps	ELECTRIC 1-Phase, 220V, 50-60Hz, 10900 Watts, 53amps 3-Phase, 220V, 50-60Hz, 10900 Watts, 29amps	ELECTRIC 1-Phase, 220V, 50-60Hz, 18000 Watts, 82amps 3-Phase, 220V, 50-60Hz, 18000 Watts, 56amps	ELECTRIC 3-Phase, 220V, 50-60Hz, 30600 Watts, 91amps